

HAVILAH
COURT
MOWE

A Project by:  Sterling
HOMES



ABOUT HAVILAH'S COURT

Havilah's Court is a modern day terrace housing structure comprised of three blocks of two bedroom apartments and one bedroom apartment. The entire structure sits on three plots of land within our havilah park and garden scheme in mowe, ogun state.

Havilah's Court is a safe and accessible abode for working professionals, business men, the young and old alike.

Set in a serene environment, the gated community affords you the ease of living with all essential amenities provided together with a good road network granting you ease of access to just about anywhere.

The apartments come in two kinds:

FINISHED : Everything ensuite and just ready for you to move in

SEMI- FINISHED: Giving you the opportunity to complete it to your unique taste.

FEATURES AND AMENITIES

Features

- Gated Community
- Electricity
- Drainage
- Portable Water
- Perimeter Fencing
- Green Areas
- Dedicated Car Park
- Recreational Facilities
- Street Light
- Interlock Compound

Amenities

- Living Room
- Bedroom
- Fitted Kitchen
- Dining
- Bathroom
- Toilet
- Terrace



IT'S MORE THAN A HOME

Comfort. Quality. Aesthetics
are the defining features of Havilah Court.

Created with you in mind, Havilah Court is designed with exquisite interior and exterior finishings to promote good living conditions.

This masterpiece comprises two-bedroom and one-bedroom apartments tailored to offer luxurious lifestyle for residents

Havilah Court is the perfect fit to call your home



ABOUT NIGERIA

Nigeria is the most populous country in Africa. It is home to over 200 million inhabitants, having one of the largest populations of youth.

Existing as a multinational state, it's been ascribed as the giant of Africa.

Over the years, Nigeria has undergone significant change in terms of its social, political and economic landscape. One of which is the exclusive transition from traditional to modern urban housing forms.



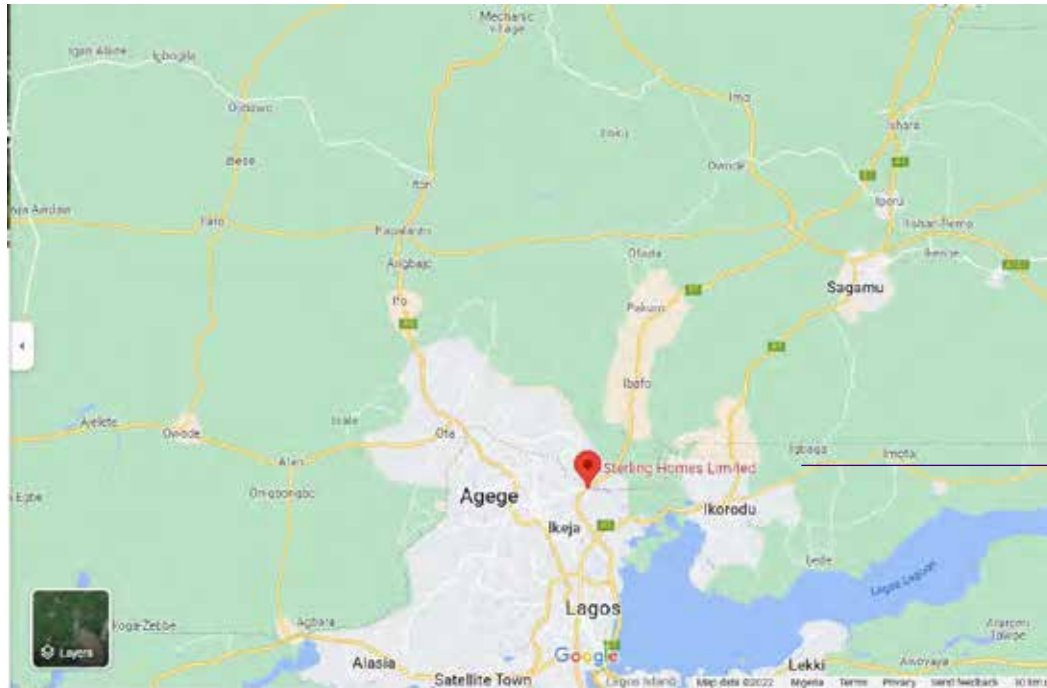
THE PERFECT LOCATION

(mowe, ogun state)

Havilah court is situated in Mowe, a town in obafemi owode LGA of Ogun State, Nigeria. Mowe is on the outskirts of Lagos, with the redemption camp, along laos-ibadan expressway, serving as a landmark.

At the present, this neighbourhood is a conglomerate of 14 communities. It's a fastly growing location opening up for the modern kind of development, and attracting economic activities. Gradually becoming the busing nw found town in Ogun, Nigeria, Mowe is now an investible site for investors to reap economic gains and value increase.

MAJOR LANDMARK



- Nestle PLC
- Redeemers University
- International Breweries PLC
- RCCG Redemption Camp

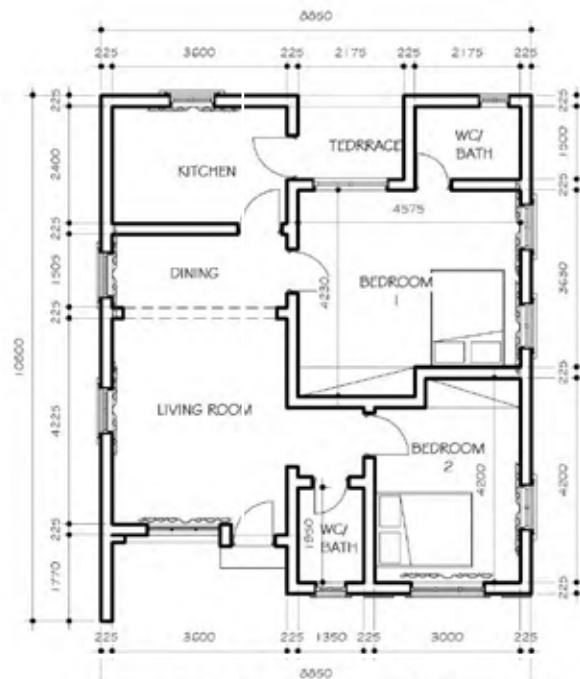
FLOOR PLAN

2 Bedroom

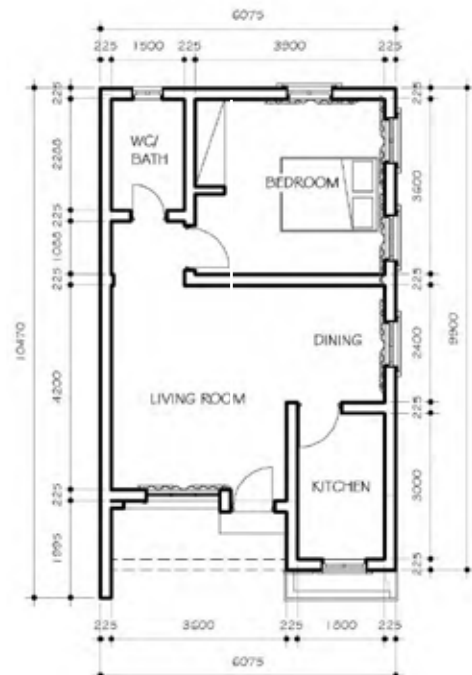


1 Bedroom





1
Grd floor plan - 2 Bedroom
1:75



2
Grd floor plan - 1 Bedroom
1:75



UNIQUE SELLING POINT

- Affordable luxury
- Gated community
- Dedicated car park
- Finished and Semi-finished options available
- Aesthetic modern design
- Modifiable spacious rooms

SASS INITIATIVES

Sterling After Sales Services

Sterling Homes Limited offers a myraid of excellent and innovative after sales packages to all our clients. As is it's frequent convention, Sterling Homes has devised three innovations that all clients can subscribe to from this new scheme viz a viz;

PEARL - Standard finishing

TREASURE - Deluxe finishing

JEWEL - Premium finishing

ONE- BEDROOM PRICING (FINISHED)

Payment Plan	Smart Plan	Flex Plan	Comfort Plan	Easy Plan
Duration	0-3 Months	6 Months	9 Months	12 Months
Total Payment	₹17,000,000	₹17,500,000	₹18,000,000	₹18,500,000
Initial Deposit		₹7,000,000 Spread Balance over 5 Months at ₹2,100,000 Monthly	₹7,200,000 Spread Balance over 8 Months at ₹1,350,000 Monthly	Equal Installment Spread over 12 Months at ₹1,541,666.66 Monthly

ONE- BEDROOM PRICING (SEMI-FINISHED)

Payment Plan	Smart Plan	Easy Plan
Duration	0-3 Months	12 Months
Total Payment	₹14,000,000	₹14,500,000
Initial Deposit		₹5,800,000 Spread Balance Over 11 Months

TWO-BEDROOM PRICING (FINISHED)

Payment Plan	Smart Plan	Flex Plan	Comfort Plan	Easy Plan
Duration	0-3 Months	6 Months	9 Months	12 Months
Total Payment	N20,000,000	N20,500,000	N21,000,000	₦21,500,000
Initial Deposit		₦8,200,000 Spread Balance over 5 Months at ₦2,460,000 Monthly	₦8,400,000 Spread Balance over 8 Months at ₦1,575,000 Monthly	Equal Installment Spread over 12 Months at ₦1,791,666.66 Monthly

TWO- BEDROOM PRICING (SEMI-FINISHED)

Payment Plan	Smart Plan	Easy Plan
Duration	0-3 Months	12 Months
Total Payment	₦17,000,000	₦17,500,000
Initial Deposit		₦7,000,000 Spread Balance Over 11 Months

OTHER PAYMENT/ ATTRIBUTED COST

- Survey plan + Legal Documentation = ~~₱~~350,000
- Development fee = **₱400,000**

Contact Information

Sterling Homes

09031216666, 07061075427

Head Office; Plot 2, River Valley Estate, Ojodu Berger, Lagos, Nigeria.

Lekki Office: Suite H49 Ikota Shopping Complex, VGC, Lekki Lagoa

Rwanda Branch: KG 315 Avenue, 1A Gisabo, Kigabagaba Kigali, Rwanda
+250737608952

London Branch: 20 Cricketers Close, Erith, Kent DA81TU
+44 7575 451452

USA Branch: 1925s, Corper Street, Arlington TX 76010
+1 (214) 415-2793

www.sterlinghomesltd.com/havilah-court/

